

## Technische info-rubriek

Nummer	:	T03E.056 WAITROSE
Betreft	:	Instructions for part exchange Weight Saver / UTB components
Datum	:	13-10-2003

---

### Replacing transducer

Items needed:                      Transducer WS

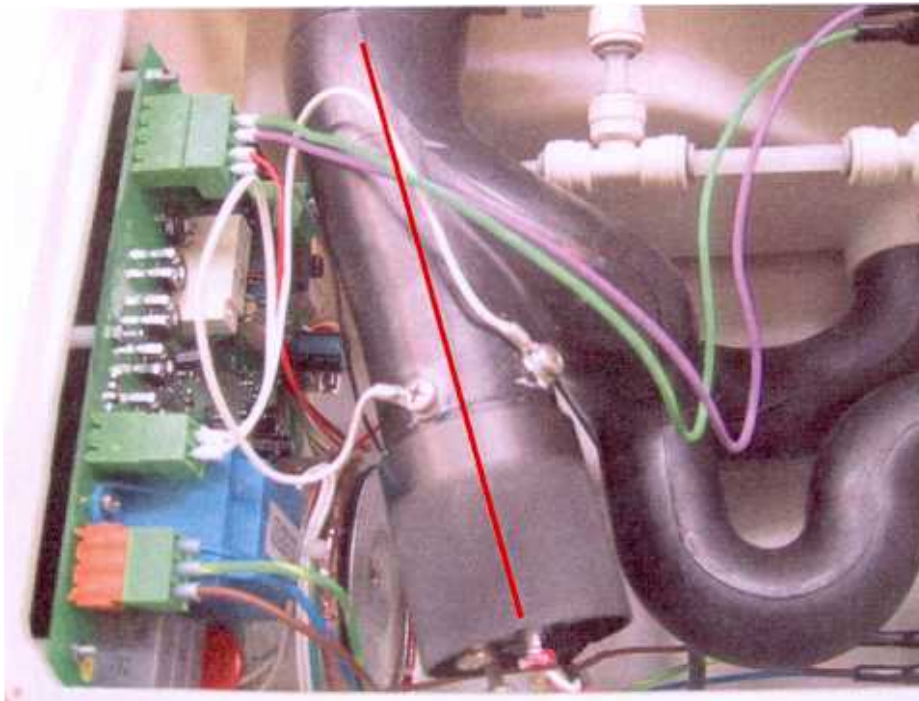
*Replacing only the transducer on an existing UTB transducer head is not possible!*

- 1) Turn off water and power supply. Take unit out of the case.
- 2) Let the water run out of the internal piping system by tilting the unit under a bucket.
- 3) Remove side panel and disconnect the transducer connector. Unscrew transducer head. Keep the O-ring for a tight seal onto the piping system.
- 4) Remove Earth from rear of transducer head by removing the spring clip.
- 5) Remove plastic holder.
- 6) Remove transducer from rubber.
- 7) Place new transducer in plastic holder. Rubber has to seal properly!
- 8) Rebuild in reverse (so: 4,3,2,1).

## Replace Transducer head Weight Saver or UTB C

Items needed:                    **Transducer head WS, complete with O-ring**

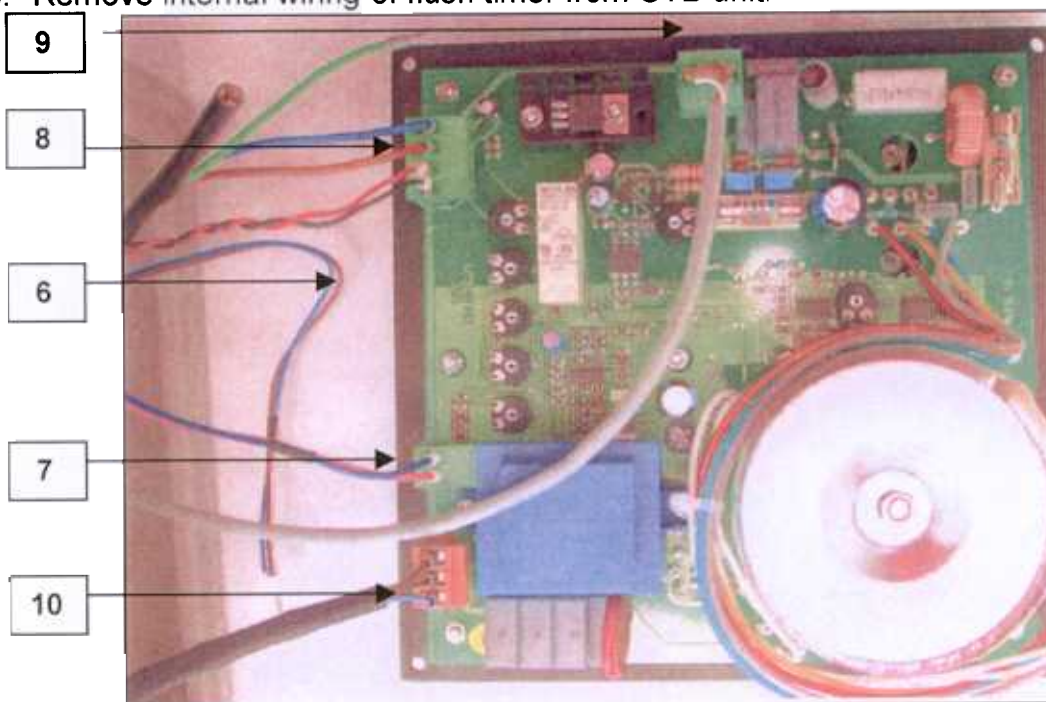
1. Turn off water and power supply. Take unit out of the case.
2. Let the water run out of the internal piping system by tilting the unit under a bucket.
3. Remove side panel and disconnect the transducer connector. Unscrew transducer head. Keep the O-ring for a tight seal onto the piping system.
4. Place new transducer head with O-ring on the piping system and screw tight by hand.
5. Align the red marked bold and the line as shown in the picture.
6. Rebuild in reverse (so: 3,2,1).



## Replace PBC with front of UTB C to Weight Saver

Items needed: PBC and front WS

1. Turn off power supply.
2. Disconnect external control flush timer of UTB Compact unit and remove from unit.
3. Remove timer and wiring from Main control unit of the counter.
4. Take front, including PBC out of the unit.
5. Disconnect the connectors from PBC.
6. Remove internal wiring of flush timer from UTB unit.



**Picture: position connectors UTB and Weight Saver on rear side of PBC**

7. Take wire 1 (blue) and 2 (red) out of the 7-pile connector. These wires are from the water sensor. Mount these onto the 2-pile plug (red and blue may be switched).
8. Remove the other wires out of the 7-pile connector and connect blue brown (magnetic valve) and red-black (fan) on the 4-pile connector as indicated on this connector. The earth wire of the magnetic valve (green/yellow) will not be connected.
9. Mount the 3-pile connector of the transducer.
10. Mount the 3-pile connector for the power supply (orange).
11. Build in PBC and front into unit and assemble.
12. When available: replace 2 pile capacity 0-10 volts cable by 2-pile cable HKUTB-01-02. Connect Din-plug on front side of Weight Saver.

## Replacing complete UTB C to Weight Saver

**Items needed:**      **Weight Saver unit including power lead.**  
                             **PVC socket 50 – 70 mm**  
                             **PVC bend 90 degrees, 50 mm, socket/gib**

- 1) Turn off water and power supply. Take unit out of case.
- 2) Disconnect power lead on rear side of the unit.
- 3) Disconnect and remove external control flush timer.
- 4) Remove timer and wiring out of the main control box of the case.
- 5) Let the water run out of the internal piping system by tilting the unit under a bucket.
- 6) Replace power lead of UTB C by the power lead of the Weight Saver with modified connector.
- 7) Replace socket of 70mm with socket 70-80mm.
- 8) When available: replace 2 pile capacity 0-10 volts cable by 2-pile cable HKUTB-01-02. Connect Din-plug on front side of Weight Saver.
- 9) Install the new Weight Saver.